

INSTRUCTION MANUAL FOR PT POST HYDRAULIC LIFT TABLE

1. Brief instruction

I. Use & applicable range

It is a convertible vehicle using for lifting and transporting goods, the load capacity is from 100kg to 3000kg which use in workshop, warehouse and wharf, etc.

II. Characteristics:

- (1) Use foot step the pump cylinder to lift the table.
- (2) Push to make the wheels running and move the cart by hand.

III. Basic Data:

Model	PT-02	PT-05	PT-10	PT-20	PT-60
Capacity	100kg	250kg	500kg	1000kg	3000kg
Lift Height	1245mm	1245mm	1372mm	1372mm	1372mm
Minimum Height	790mm	790mm	915mm	915mm	915mm
Table Dimensions	406×406mm	458×458mm	915×508mm	915×610mm 915×768mm	925×610mm 1220×812mm
Net Weight	28kg	47kg	85kg	128kg/142kg	152kg/185kg

2. Parts & Assembly

I. Compose (see picture 1)

This post hydraulic lift table has three parts: table assembly (1), cylinder (2) and wheel frame assembly (3). The cylinder installed on the frame and join with the table on the top, the push handle installed on the table.

II. Hydraulic System

The check valve of the hydraulic system takes foot pedal to discharge and return site by turn spring. When foot the pedal up and down equably , the single valve will absorb oil or press oil to push the table lift up. When the table arrive the max height, press oil flow into the oil box by set site hole of the lift piston to control the site of the table. When the loading exceed the rate capacity of the cart, the safe valve will open. When you foot the discharge valve, the single valve will be opened and the press oil flow into the out cylinder, and then the table will lower down.

3. Lubrication

- (1) The hydraulic system adopts machinery oil #32. Replace the oil once in the first month and then regularly replace the oil every six months.
- (2) Keep oil clean. Check and keep the oil without solid matter, acidity and water.
- (3) Replace the oil when it has a long time without using the cart. Use grease to lubricate all movable parts and test the empty cart.

4. Using

I. Trial Cart

- (1) Check the post hydraulic lift table and confirm the joint parts are ok.
- (2) Check to lift the table, and check whether the check valve return site according to the standard.
- (3) Check to down the table, foot the discharge pedal to push the top rod and then the single valve will be opened and the table lowering down.

II. Operation

- (1) Please fasten the cart by foot the swivel wheel brake before load the goods.
- (2) Close the check valve, foot the pedal lift and down equably in its rate capacity and load or discharged when the table lift to the needs height.
- (3) Open the check valve when the table lowering down.

III. Warning!

- (1) The cart shall not be used in applications where a risk of exceeding the rated capacity exists.
- (2) Not put your hand into the leader post.
- (3) Not put your foot on the pedal of the wheel when the cart lowering down.
- (4) The goods must put more than 80% area of the table.
- (5) Do not use the cart on slope.
- (6) Not move the table when the table with goods and in a high site.

4. Maintenance

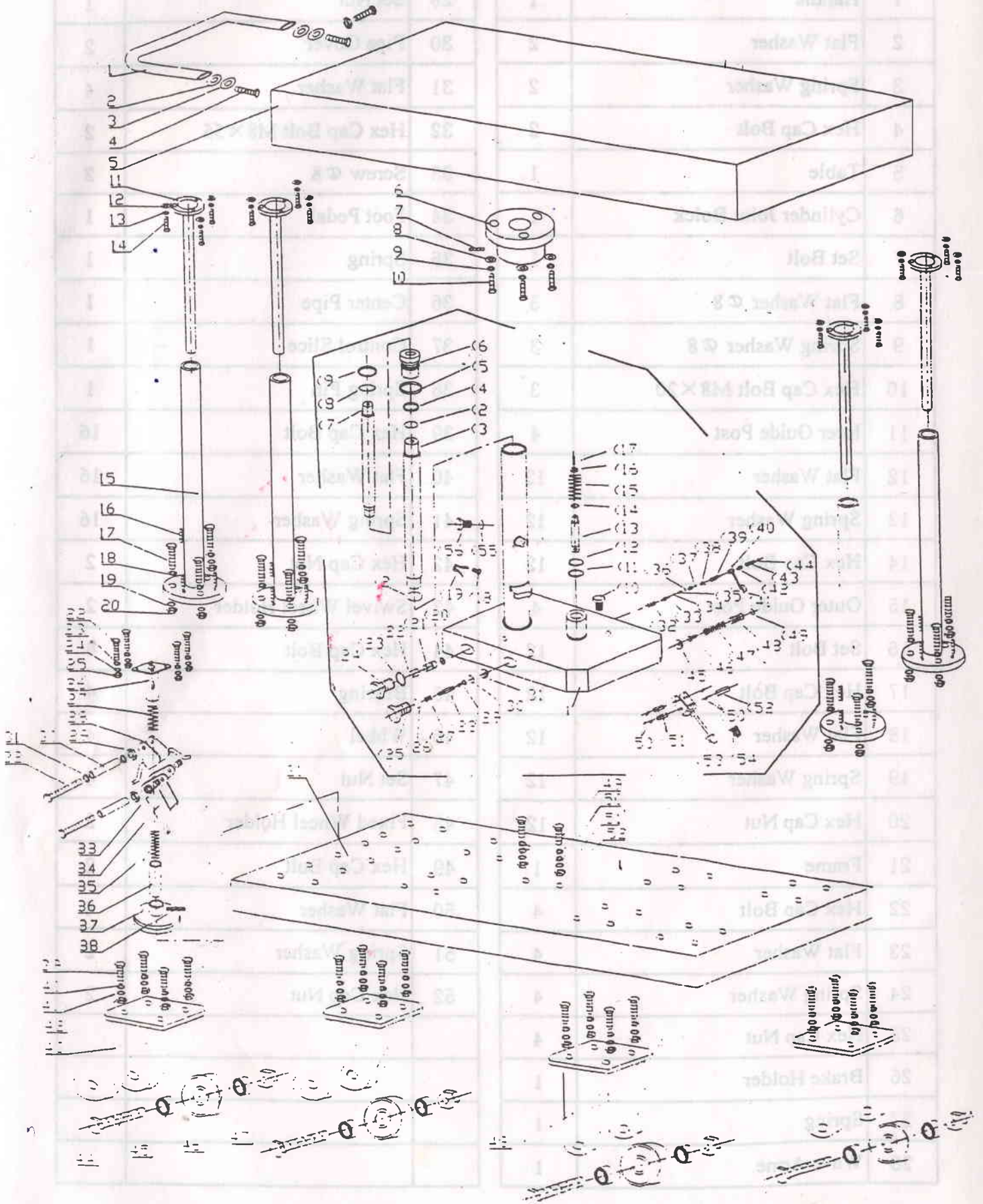
I. The table should keep clean.

II. Check oil of the cylinder frequently, you should makeup oil when the oil less than 2/3 of the cylinder.

5. Troubles Shooting

Trouble	Cause	Action
Table does not rise	Oil seal in the pump cylinerworn out	Replace oil seal
	Single valve, steel ball and prick valve worn out.	Clean the steel ball or replace parts.
Table does not lower down	The lowering valve does not work.	Clean the lowering valve and adjust the screw according to the standard.
Leak oil	Oil seal in the cylinder worn out.	Replace the oil seal.

PT-20 Post Hydraulic Table



PT-20 Post Hydraulic Table

No.	Description	Q'ty
1	Handle	1
2	Flat Washer	2
3	Spring Washer	2
4	Hex Cap Bolt	2
5	Table	1
6	Cylinder Joint Bolck	1
7	Set Bolt	1
8	Flat Washer $\varnothing 8$	3
9	Spring Washer $\varnothing 8$	3
10	Hex Cap Bolt M8 \times 20	3
11	Inter Guide Post	4
12	Flat Washer	12
13	Spring Washer	12
14	Hex Cap Bolt	12
15	Outer Guide Post	4
16	Set Bolt	12
17	Hex Cap Bolt	12
18	Flat Washer	12
19	Spring Washer	12
20	Hex Cap Nut	12
21	Frame	1
22	Hex Cap Bolt	4
23	Flat Washer	4
24	Spring Washer	4
25	Hex Cap Nut	4
26	Brake Holder	1
27	Spring	1
28	Wave Arme	1

No.	Description	Q'ty
29	Set Nut	1
30	Pipe Cover	2
31	Flat Washer	4
32	Hex Cap Bolt M8 \times 55	2
33	Screw $\varnothing 8$	2
34	Foot Pedal	1
35	Spring	1
36	Center Pipe	1
37	Control Slice	1
38	Spring Pin	1
39	Hex Cap Bolt	16
40	Flat Washer	16
41	Spring Washer	16
42	Hex Cap Nut	2
43	Swivel Wheel Holder	2
44	Hex Cap Bolt	4
45	Bearing	4
46	Wheel	4
47	Set Nut	4
48	Fixed Wheel Holder	2
49	Hex Cap Bolt	2
50	Flat Washer	4
51	Spring Washer	2
52	Hex Cap Nut	2

PT-20 Post Hydraulic Table

No.	Description	Q'ty	No.	Description	Q'ty
(1)	Valve	1	(29)	Valve Cover	1
(2)	O-ring 32.5×1.8	2	(30)	O-ring \varnothing 10×1.9	1
(3)	Inter Cylinder	1	(31)	Steel Ball \varnothing 7	1
(4)	Dust Cover DH28	1	(32)	Spring	1
(5)	O-ring 56×3.5	1	(33)	Push Rod	1
(6)	Cylinder Cover	1	(34)	O-ring \varnothing 15×2.4	1
(7)	Lift Piston	1	(35)	Push Rod Cover	1
(8)	O-ring 34×3.5	1	(36)	Guide Cover	1
(9)	Dust Cover DH28	1	(37)	Pin	1
(10)	Hex Cap Bolt	1	(38)	Spring	1
(11)	Oil Seal DH18	1	(39)	Link Rod	1
(12)	Dust Cover UHS18	1	(40)	M6 Bolt	1
(13)	Pump Piston	1	(41)	Slice	1
(14)	O-ring 28×3.1	1	(42)	Bushing	1
(15)	Spring	1	(43)	Bolt	1
(16)	Spring Seat	1	(44)	Nut	1
(17)	Pin \varnothing 4×26	1	(45)	Steel Ball \varnothing 7	1
(18)	Screw M6	1	(46)	Spring Seat	1
(19)	Slice	1	(47)	Spring	1
(20)	O-ring 9×1.8	1	(48)	Set Screw	1
(21)	Lowering Valve	1	(49)	O-ring 10×1.9	1
(22)	Washer \varnothing 12×8	1	(50)	C-ring	4
(23)	Washer \varnothing 14	1	(51)	Shaft	2
(24)	Screw Plug M14×1	1	(52)	Press Wheel	1
(25)	Set Screw	1	(53)	Foot Pedal	1
(26)	O-ring \varnothing 16×2.4	1	(54)	Rubber Cover	1
(27)	Spring	1	(55)	O-ring 10×1.9	1
(28)	Valve Core	1	(56)	Air Breather M10×1	1